

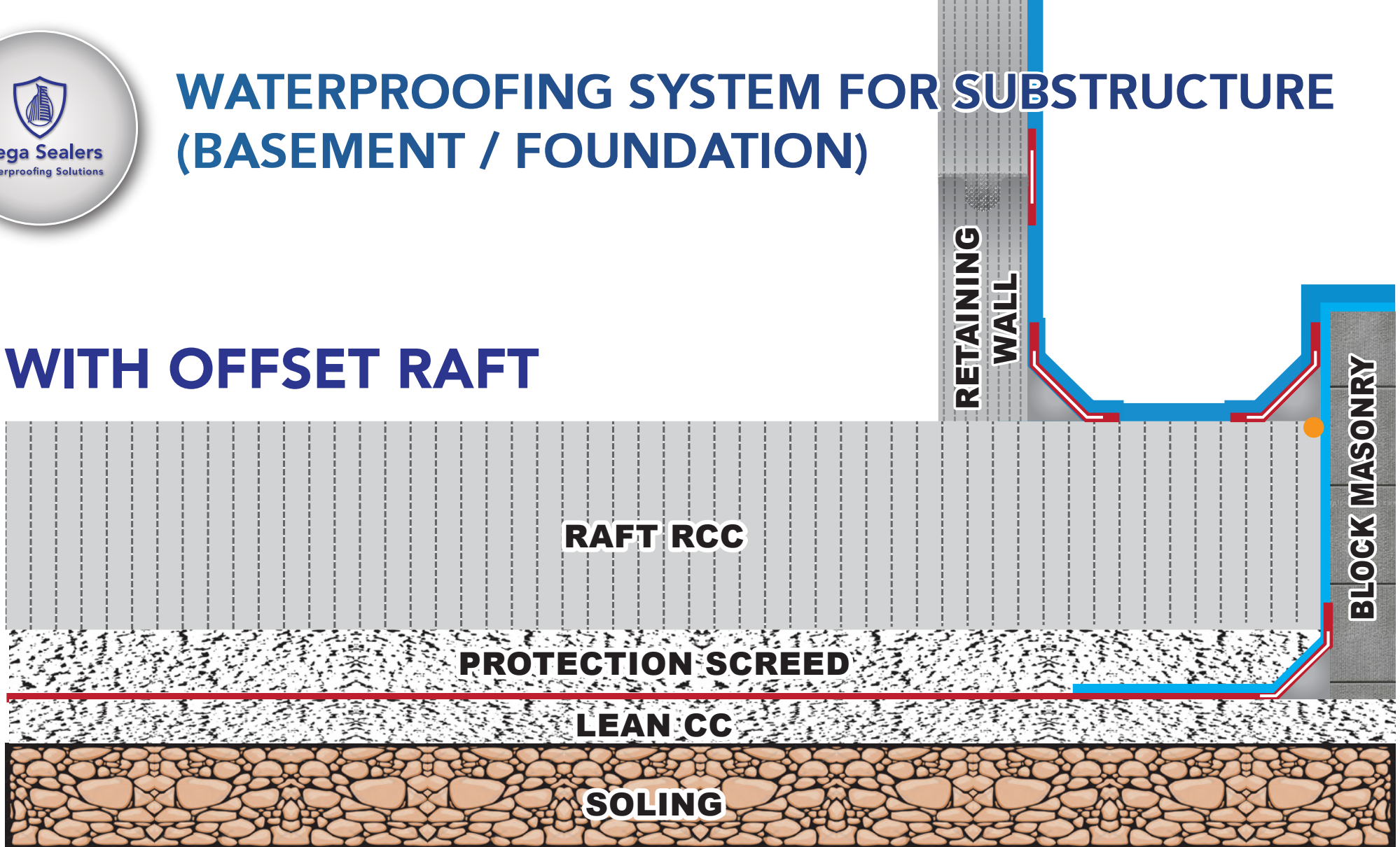


# WATERPROOFING SYSTEM FOR SUBSTRUCTURE (BASEMENT)



# WATERPROOFING SYSTEM FOR SUBSTRUCTURE (BASEMENT / FOUNDATION)

## WITH OFFSET RAFT



**MEGA WATER GUARD**

SINGLE COMPONENT POLYURETHANE BASED ELASTOMERIC COATING



**MEGA WATER SEAL PRO**

PROFESSIONAL GRADE HIGHLY FLEXIBLE TWO COMPONENT ACRYLIC CEMENTITIOUS COATING



**MEGA MAX BOND**

ELASTOMERIC POLYURETHANE JOINT SEALANT



**MEGA LATEX SBR**

STYRENE BUTADIENE RUBBER LIQUID ADMIXTURE & BONDING AGENT



**MEGA MESH FG-720**

HIGHLY VERSATILE GLASS FIBRE MESH FOR EXCELLENT BOND & REINFORCEMENT



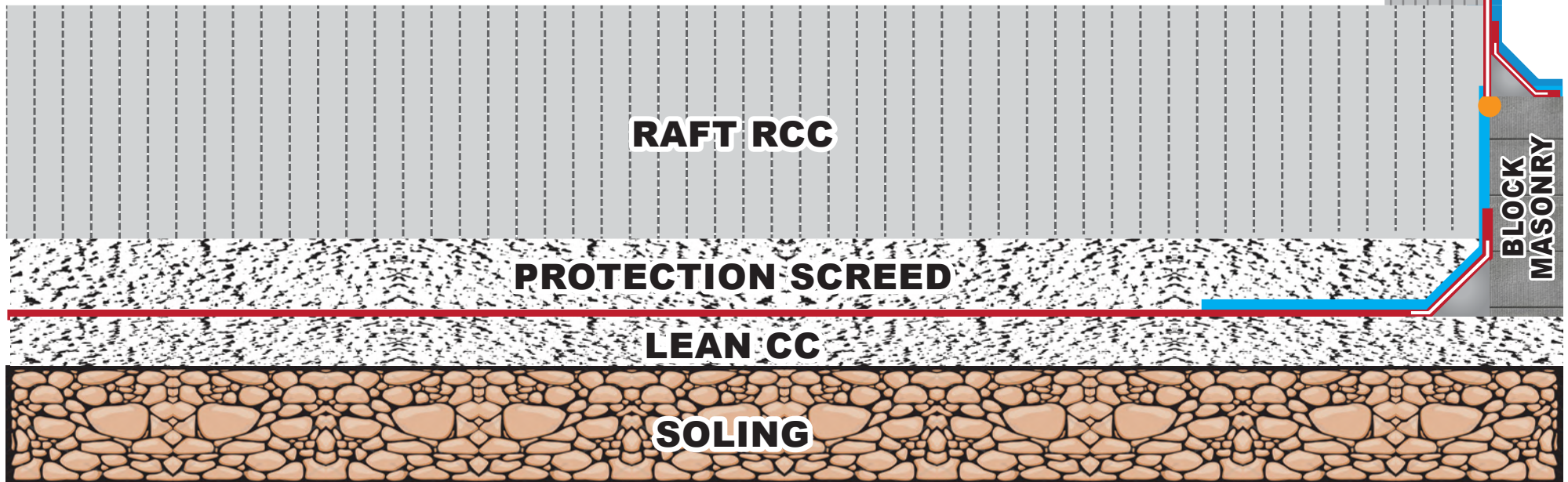
**MEGA MESH NP-721**

A HI-TECH NON-WOVEN FABRIC WITH AN EXCELLENT ABRASION RESISTANCE



# WATERPROOFING SYSTEM FOR SUBSTRUCTURE (BASEMENT / FOUNDATION)

## WITHOUT OFFSET RAFT



**MEGA WATER GUARD**

SINGLE COMPONENT POLYURETHANE BASED ELASTOMERIC COATING



**MEGA WATER SEAL PRO**

PROFESSIONAL GRADE HIGHLY FLEXIBLE TWO COMPONENT ACRYLIC CEMENTITIOUS COATING



**MEGA MAX BOND**

ELASTOMERIC POLYURETHANE JOINT SEALANT



**MEGA LATEX SBR**

STYRENE BUTADIENE RUBBER LIQUID ADMIXTURE & BONDING AGENT



**MEGA MESH FG-720**

HIGHLY VERSATILE GLASS FIBRE MESH FOR EXCELLENT BOND & REINFORCEMENT



**MEGA MESH NP-721**

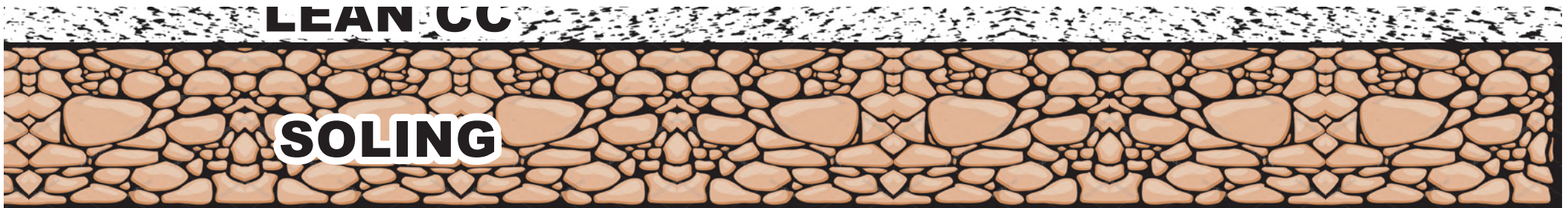
A HI-TECH NON-WOVEN FABRIC WITH AN EXCELLENT ABRASION RESISTANCE



# WATERPROOFING SYSTEM FOR SUBSTRUCTURE (BASEMENT / FOUNDATION)

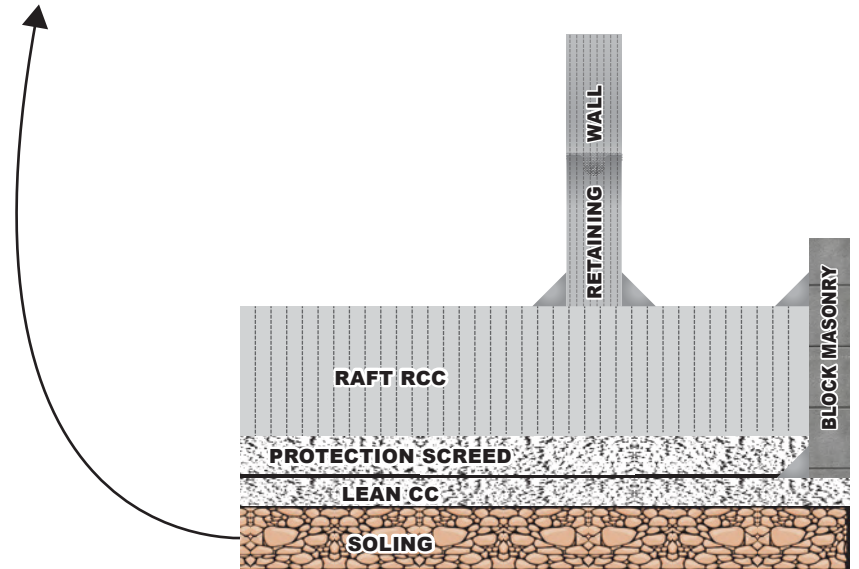
STEP # 1.0

## SOLING



### WHAT IS SOLING?

Soling is the process of hand packing rubble stones one adjacent to another, to provide a stable base to the foundation and footing, before concreting work. Rubble or boulder soling is done to enhance the bearing capacity of the soil, where hard strata are not available.

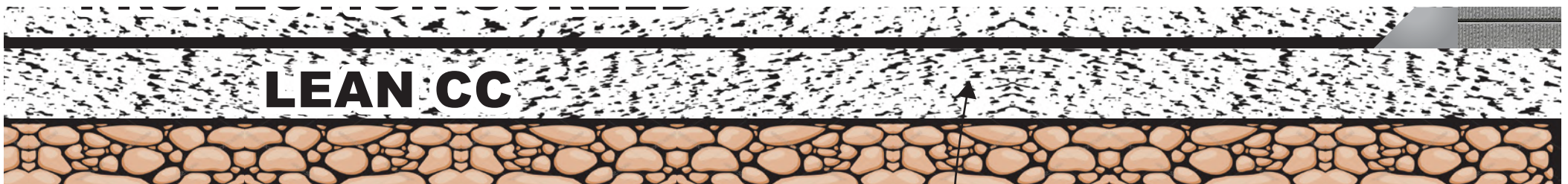




# WATERPROOFING SYSTEM FOR SUBSTRUCTURE (BASEMENT / FOUNDATION)

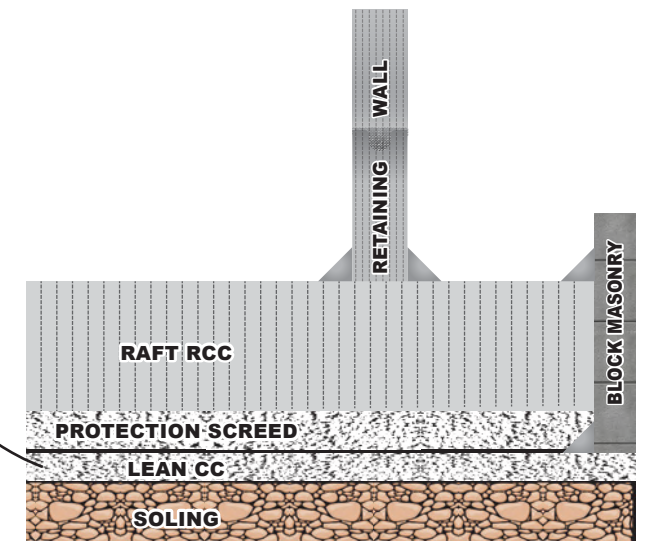
STEP # 2.0

## LEAN CC



### WHAT IS LEAN?

Lean concrete is made up of low cementitious material content. It is primarily poured through chutes, conveyor buckets, or pumps. It is used in various areas where support and strength are not critical. The mixture is highly liquid when compared to real concrete and is self-leveling, making it ideal for saving time.





# WATERPROOFING SYSTEM FOR SUBSTRUCTURE (BASEMENT / FOUNDATION)

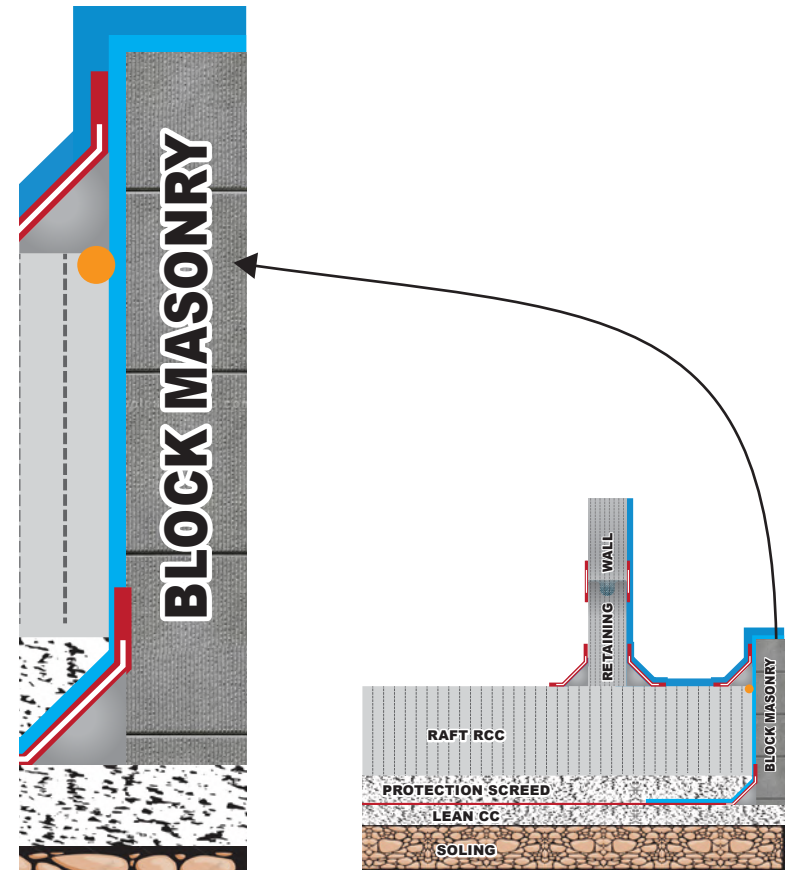
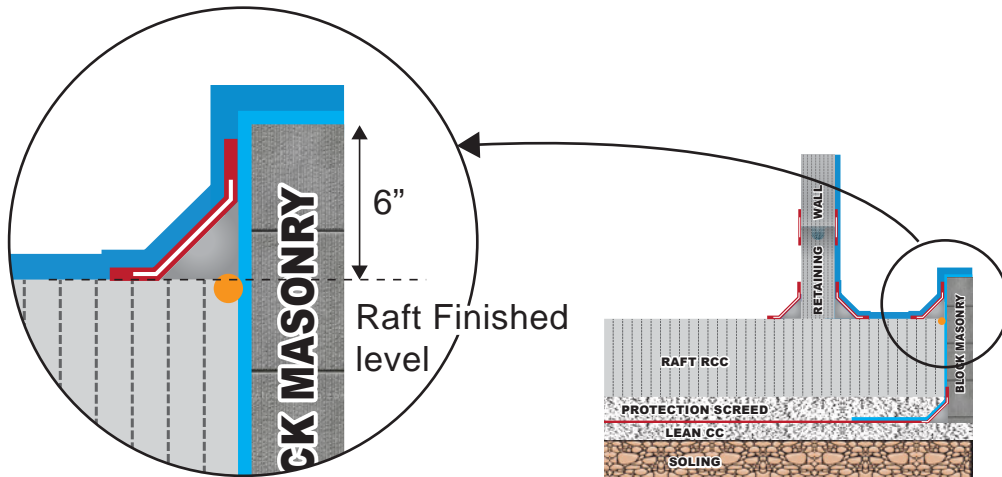
## STEP # 3.0

# BLOCK MASONRY WITH OFFSET RAFT:

A concrete masonry unit is a standard-size rectangular block used in building construction. CMUs are some of the most versatile building products available because of the wide variety of appearances that can be achieved using them.

### Recommendation:

It is highly recommended the level of block masonry should be 6" higher as compare to raft finished level.





# WATERPROOFING SYSTEM FOR SUBSTRUCTURE (BASEMENT / FOUNDATION)

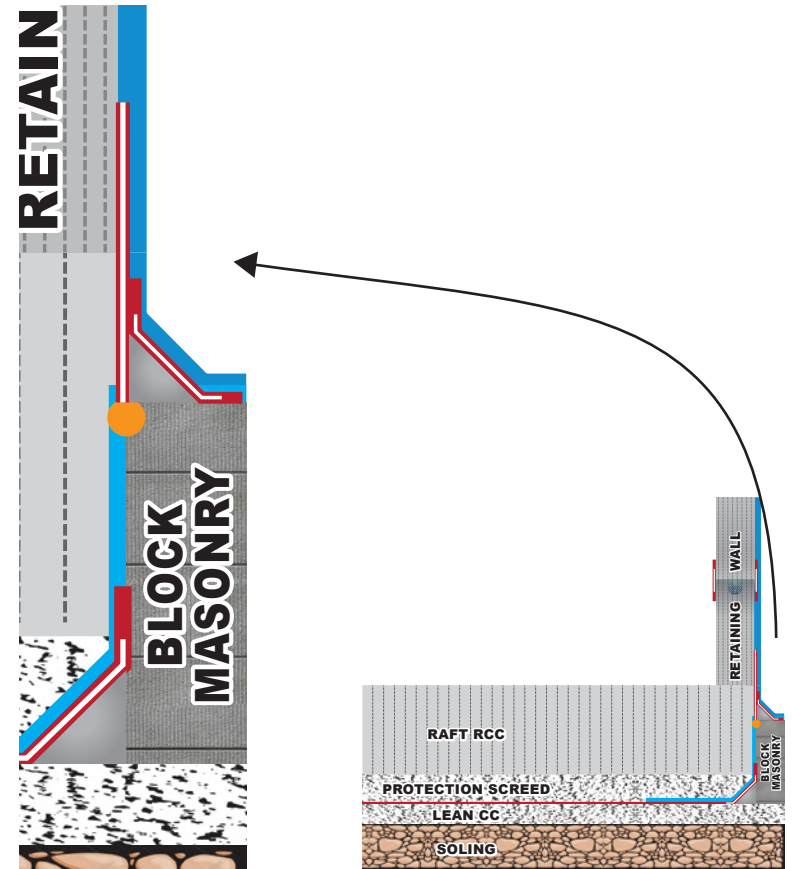
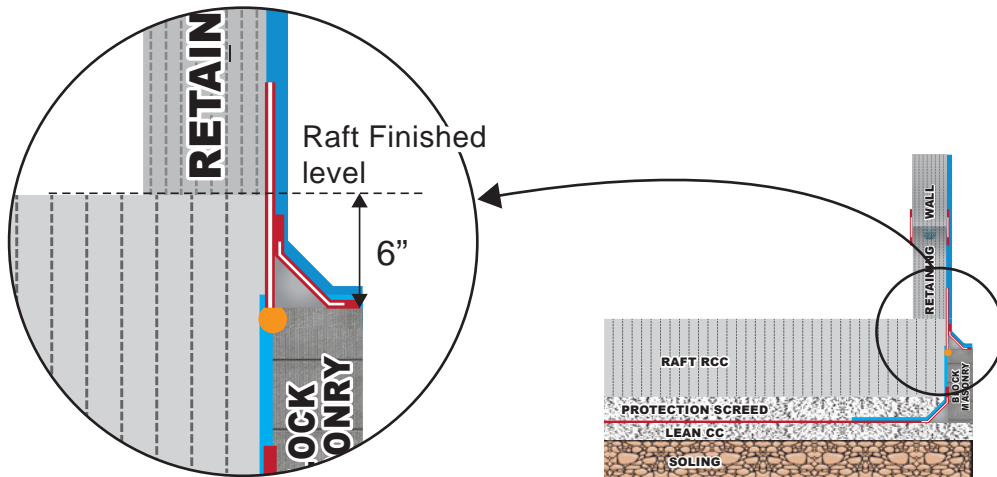
## STEP # 3.1

# BLOCK MASONRY WITHOUT OFFSET RAFT:

A concrete masonry unit is a standard-size rectangular block used in building construction. CMUs are some of the most versatile building products available because of the wide variety of appearances that can be achieved using them.

### Recommendation:

It is highly recommended the level of block masonry should be 6" lower as compare to raft finished level.



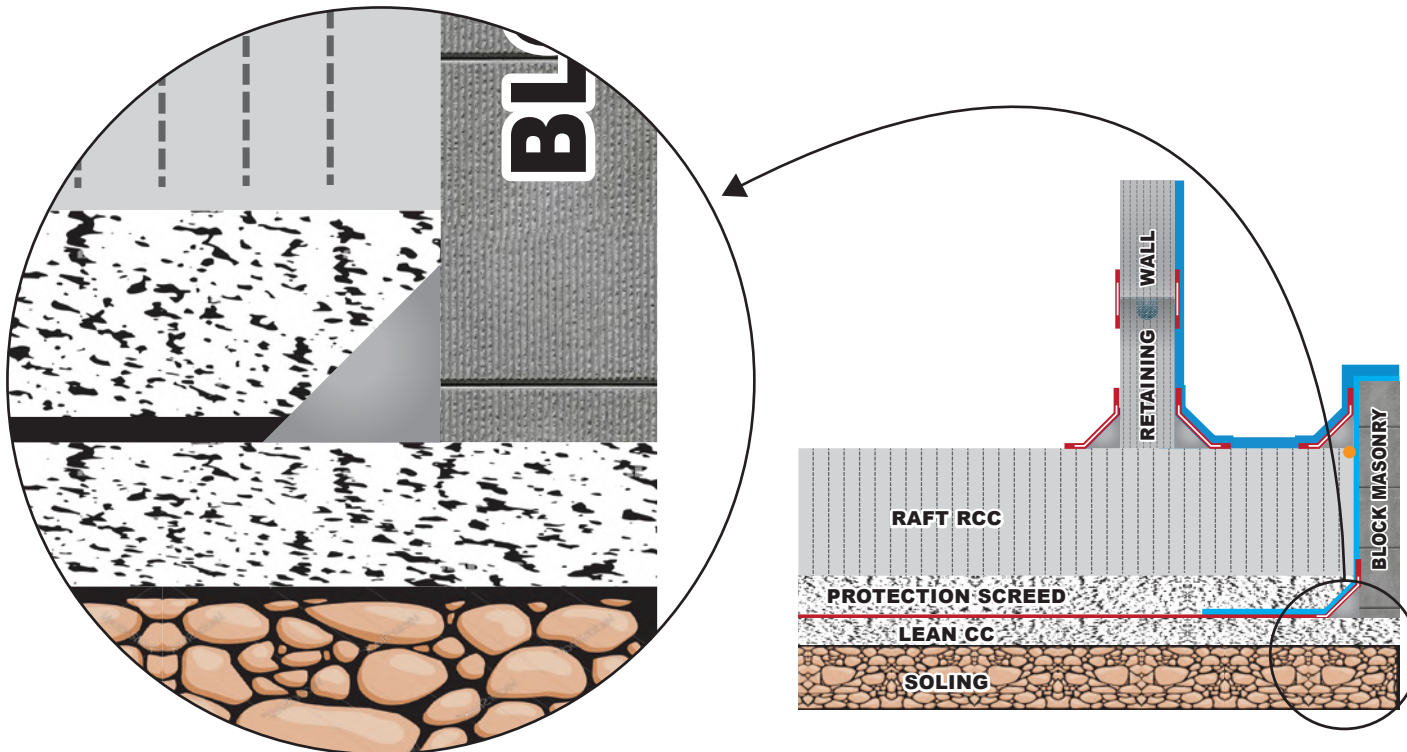


# WATERPROOFING SYSTEM FOR SUBSTRUCTURE (BASEMENT / FOUNDATION)

## STEP # 4.0

# LEAN COVING:

Coving is the technique of installing small barriers lining the edges of a floor where it meets the wall (referred to as coves). Coves are generally rounded 45-degree angles which slope upwards, preventing a hard 90-degree angle where floor and wall meet.







# WATERPROOFING SYSTEM FOR SUBSTRUCTURE (BASEMENT / FOUNDATION)

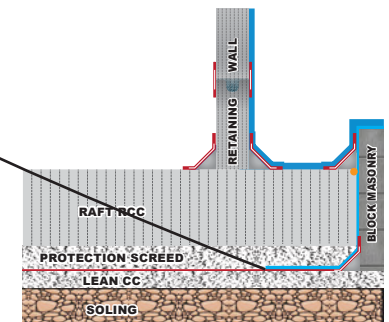
## STEP # 5.0

# LEAN COATING:

Apply the mixed **MEGA WATER SEAL PRO** (PROFESSIONAL GRADE HIGHLY FLEXIBLE TWO COMPONENT ACRYLIC CEMENTITIOUS COATING) to the prepared surface of lean and work in thoroughly using a hard broom or a brush. Fully cover the whole surface area with the bonding agent.



**MEGA WATER SEAL PRO**  
PROFESSIONAL GRADE HIGHLY FLEXIBLE  
TWO COMPONENT ACRYLIC CEMENTITIOUS COATING



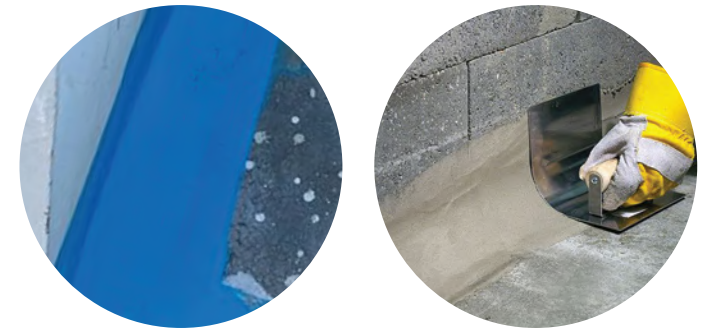


# WATERPROOFING SYSTEM FOR SUBSTRUCTURE (BASEMENT / FOUNDATION)

## STEP # 5.1

# LEAN COVING COATING:

**MEGA MESH NP-721** (A HI-TECH NON-WOVEN FABRIC WITH AN EXCELLENT ABRASION RESISTANCE) reinforcement 4" / 6" / 8" along with base and top coat of **MEGA WATER SEAL PRO** to ensure critical areas additional strength waterproofing treatment.



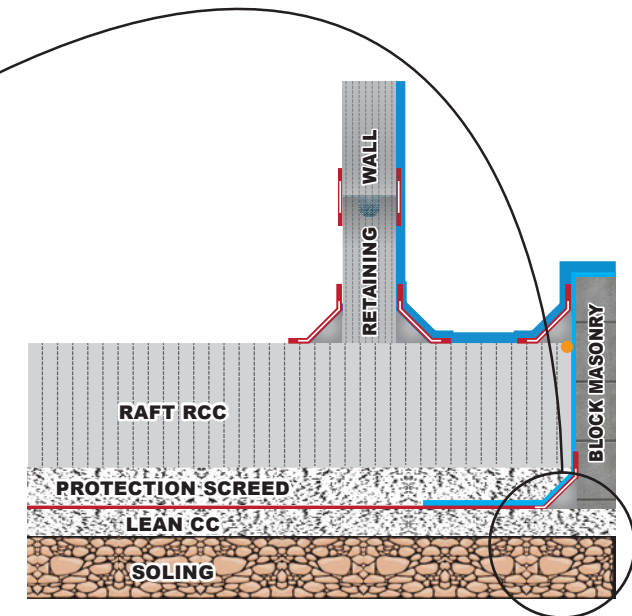
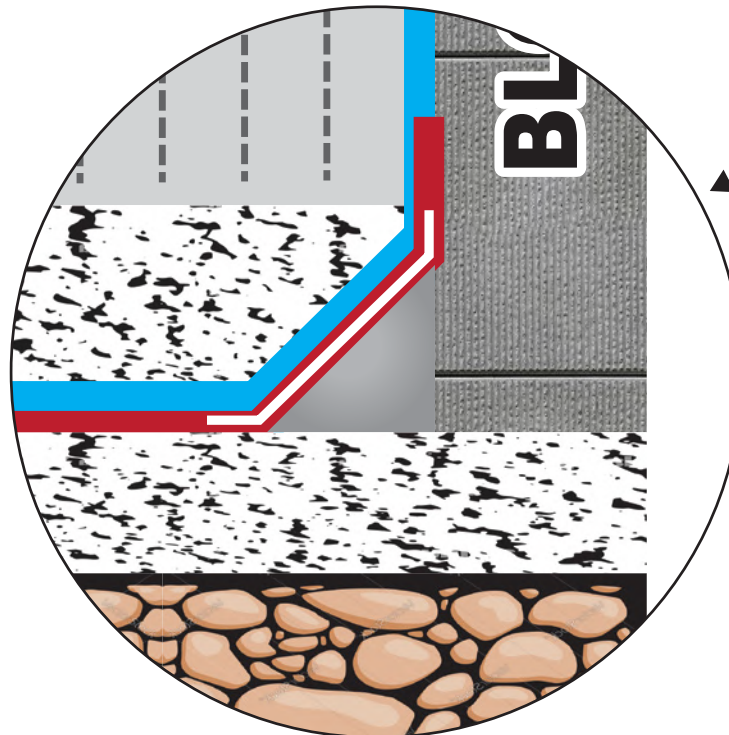
### MEGA WATER SEAL PRO

PROFESSIONAL GRADE HIGHLY FLEXIBLE  
TWO COMPONENT ACRYLIC CEMENTITIOUS COATING



### MEGA MESH NP-721

A HI-TECH NON-WOVEN FABRIC WITH  
AN EXCELLENT ABRASION RESISTANCE





# WATERPROOFING SYSTEM FOR SUBSTRUCTURE (BASEMENT / FOUNDATION)

## STEP # 5.2

# MEGA MESH FG-720

**MEGA MESH FG-720** (A HI-TECH NON-WOVEN FABRIC WITH AN EXCELLENT ABRASION RESISTANCE) reinforcement 12" / 24" / 36" would be used on construction and expansion joints with base coat of **MEGA WATER SEAL PRO** and top coat of **MEGA WATER GUARD** for maximum strenght and highly flexible critical areas waterproofing treatment.



**MEGA WATER GUARD**  
SINGLE COMPONENT POLYURETHANE  
BASED ELASTOMERIC COATING



**MEGA WATER SEAL PRO**  
PROFESSIONAL GRADE HIGHLY FLEXIBLE  
TWO COMPONENT ACRYLIC CEMENTITIOUS COATING



**MEGA MESH FG-720**  
HIGHLY VERSATILE GLASS FIBRE MESH FOR  
EXCELLENT BOND & REINFORCEMENT



# WATERPROOFING SYSTEM FOR SUBSTRUCTURE (BASEMENT / FOUNDATION)

## STEP # 6.0

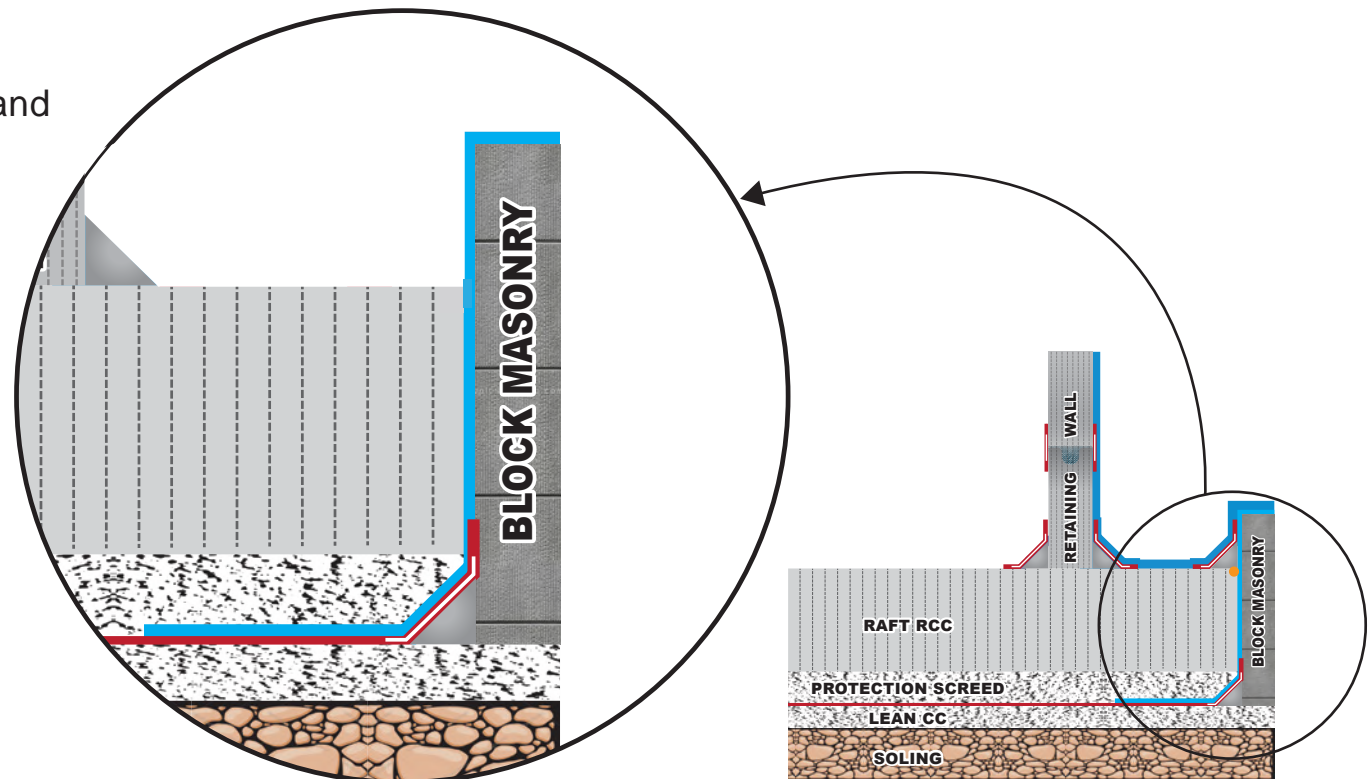
# CRITICAL AREA BORDER COATING:

Apply the **MEGA WATER GUARD** (SINGLE COMPONENT POLYURETHANE BASED ELASTOMERIC COATING) to the surface.

It will start from 5 feet before lean coving and will reach block masonry.



**MEGA WATER GUARD**  
SINGLE COMPONENT POLYURETHANE  
BASED ELASTOMERIC COATING





# WATERPROOFING SYSTEM FOR SUBSTRUCTURE (BASEMENT / FOUNDATION)



## MEGA WATER SEAL PRO

PROFESSIONAL GRADE HIGHLY FLEXIBLE  
TWO COMPONENT ACRYLIC CEMENTITIOUS  
COATING

It is a complete user friendly cementitious waterproofing system, consisting of two component factory blended package in a strict quality control environment, to ensure optimum results after use. The two components are mortar based on cements, fine-grain aggregates with special additives and synthetic polymers in water dispersion. After curing it forms a flexible layer impermeable to CO<sub>2</sub> SO<sub>2</sub> chlorides and sulphates.



## MEGA WATER GUARD

SINGLE COMPONENT POLYURETHANE  
BASED ELASTOMERIC COATING

MEGA WATER GUARD polyurethane based elastomeric liquid water proofing coating used for sealing and protecting concrete and masonry substrates against water, dampness and seepage with a long-lasting, semi-smooth, decorative White / Blue / Grey finish.



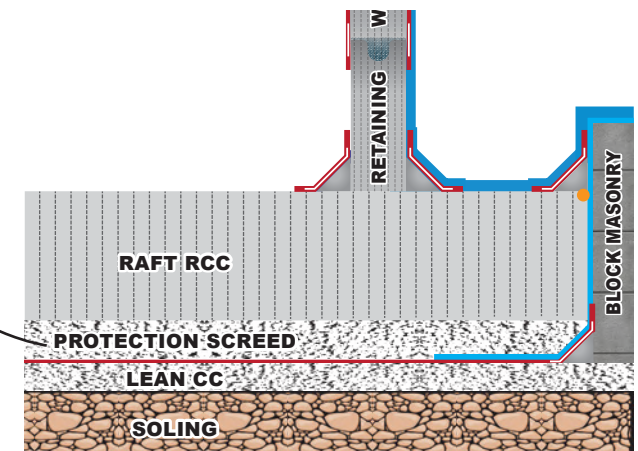
# WATERPROOFING SYSTEM FOR SUBSTRUCTURE (BASEMENT / FOUNDATION)

STEP # 7.0

## PROTECTION SCREED:



Protecting screeds from direct traffic and impact until they dry properly and develop adequate strength is as important as ensuring the right curing and drying conditions.





# WATERPROOFING SYSTEM FOR SUBSTRUCTURE (BASEMENT / FOUNDATION)





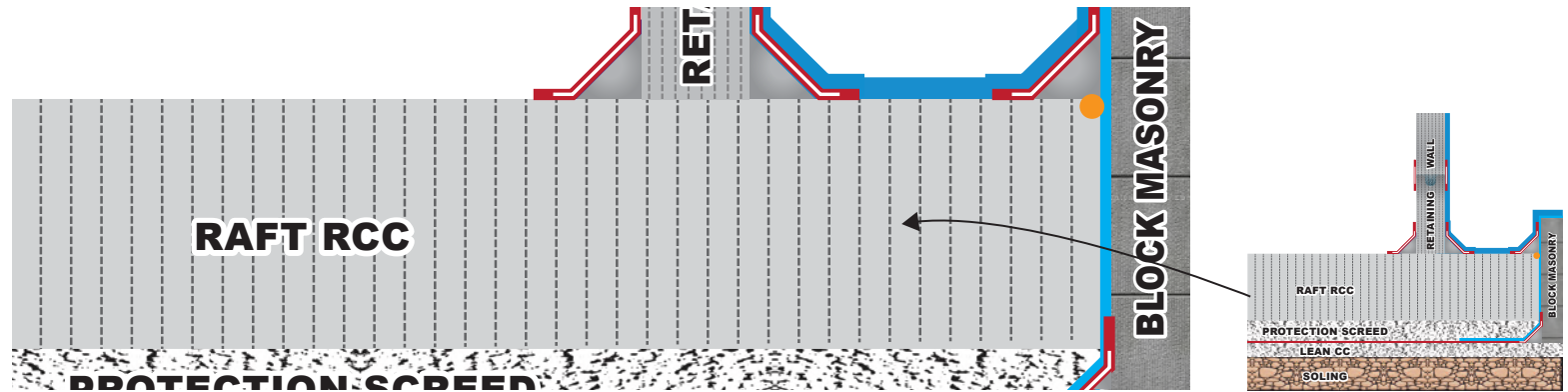
# WATERPROOFING SYSTEM FOR SUBSTRUCTURE (BASEMENT / FOUNDATION)

## STEP # 8.0

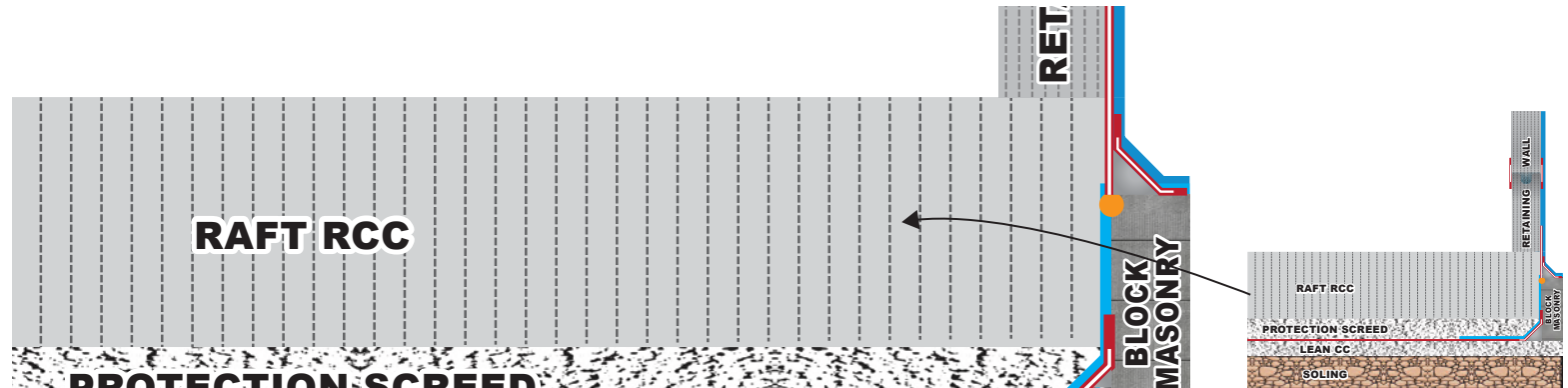
### RAFT:

Raft foundations are a type of foundation with high integrity in which four foundation piers are connected together using a large foundation slab to form a massive structure and the foundation piers are connected through beams.

### WITH OFFSET RAFT



### WITHOUT OFFSET RAFT







# WATERPROOFING SYSTEM FOR SUBSTRUCTURE (BASEMENT / FOUNDATION)

STEP # 9.0

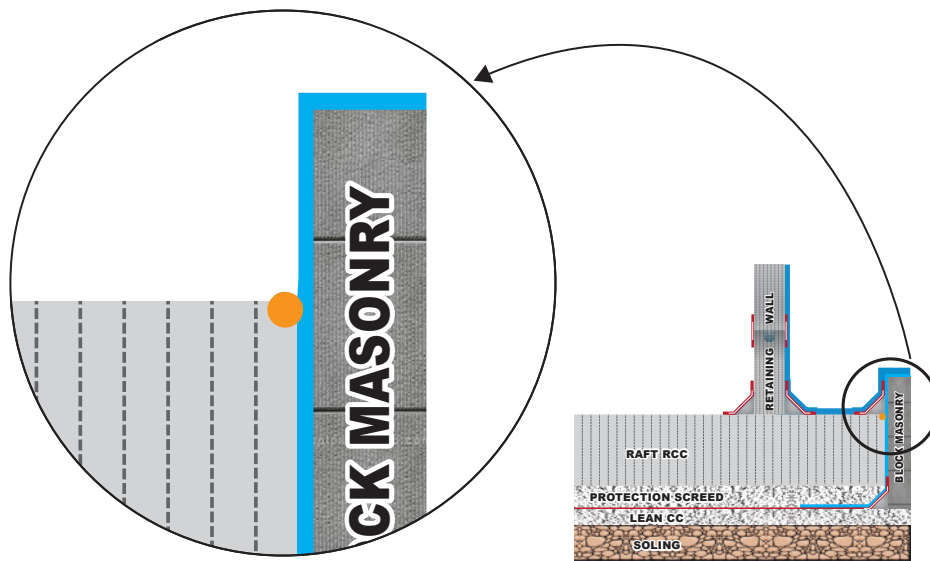
## GAP FILLING BETWEEN RAFT AND BLOCK MASONRY :

Fill the gap between raft and block masonry for higher bonding with **MEGA MAX BOND**.

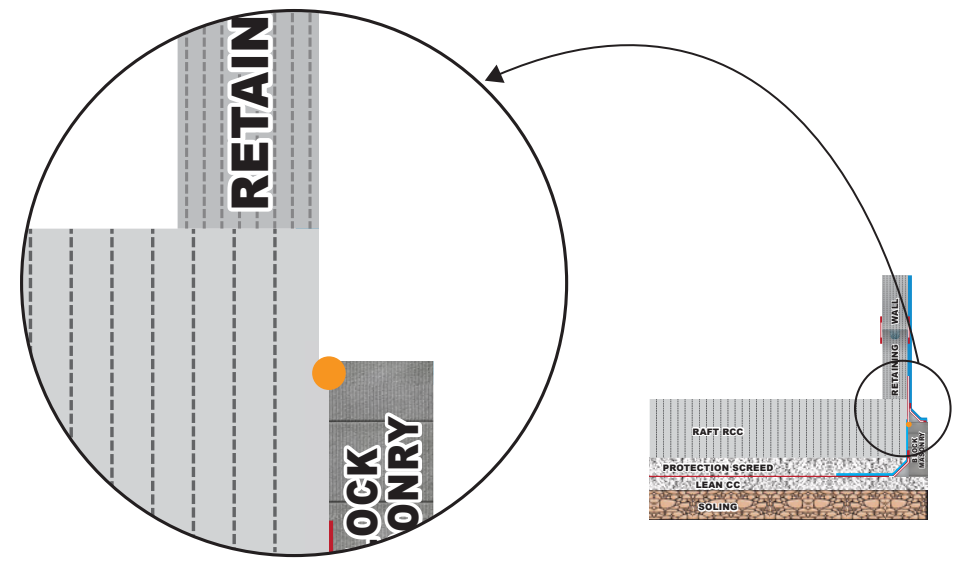


**MEGA MAX BOND**

ELASTOMERIC POLYURETHANE  
JOINT SEALANT



Without Offset Raft



With Offset Raft



# WATERPROOFING SYSTEM FOR SUBSTRUCTURE (BASEMENT / FOUNDATION)

## STEP # 9.1

# COATING OVER THE JOINED OF RAFT AND RETAINING WALL:

**MEGA MESH FG-720** (HIGHLY VERSATILE GLASS FIBRE MESH FOR EXCELLENT BOND & REINFORCEMENT) reinforcement 12" along with base and top coat of **MEGA WATER SEAL PRO** to ensure critical areas additional strength waterproofing treatment.



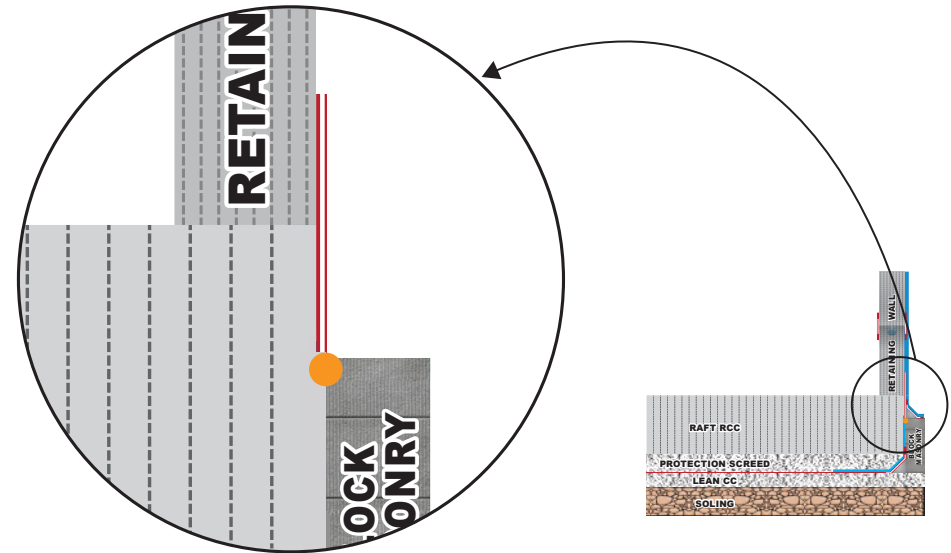
### MEGA MESH FG-720

HIGHLY VERSATILE GLASS FIBRE MESH FOR EXCELLENT BOND & REINFORCEMENT



### MEGA WATER SEAL PRO

PROFESSIONAL GRADE HIGHLY FLEXIBLE TWO COMPONENT ACRYLIC CEMENTITIOUS COATING



**With Offset Raft**

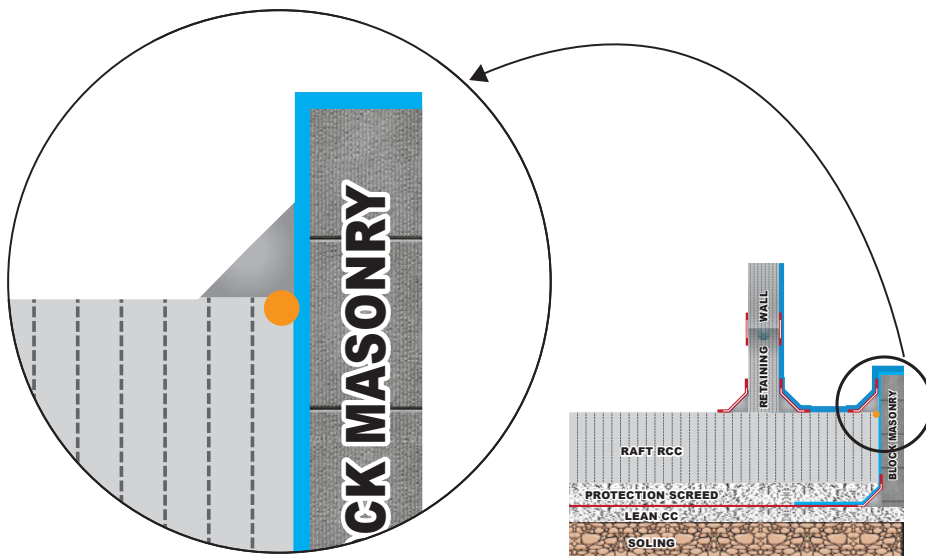


# WATERPROOFING SYSTEM FOR SUBSTRUCTURE (BASEMENT / FOUNDATION)

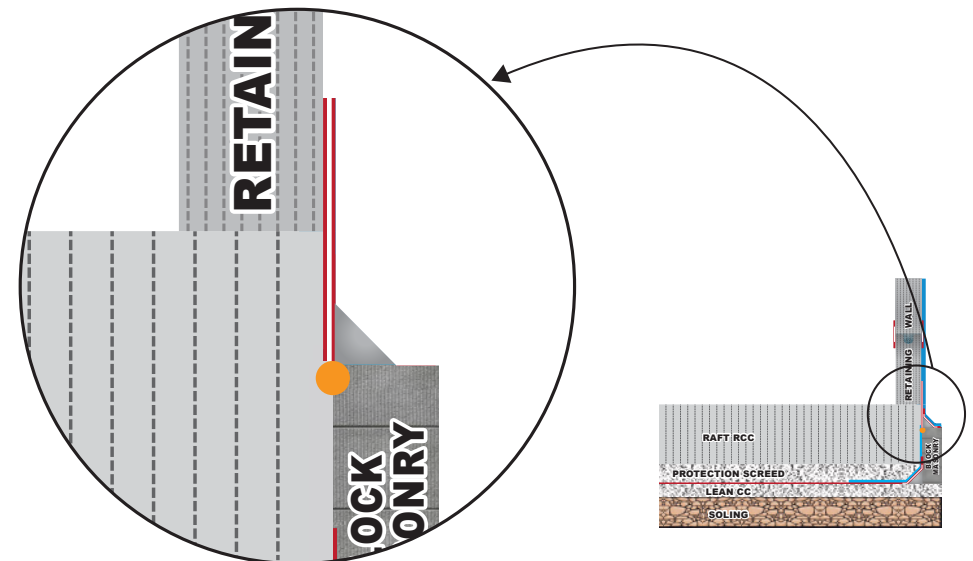
## STEP # 9.2

# COVING (AFTER CURING PERIOD OF MAX BOND):

Coving is the technique of installing small barriers lining the edges of a floor where it meets the wall (referred to as coves). Coves are generally rounded 45-degree angles which slope upwards, preventing a hard 90-degree angle where floor and wall meet.



Without Offset Raft



With Offset Raft

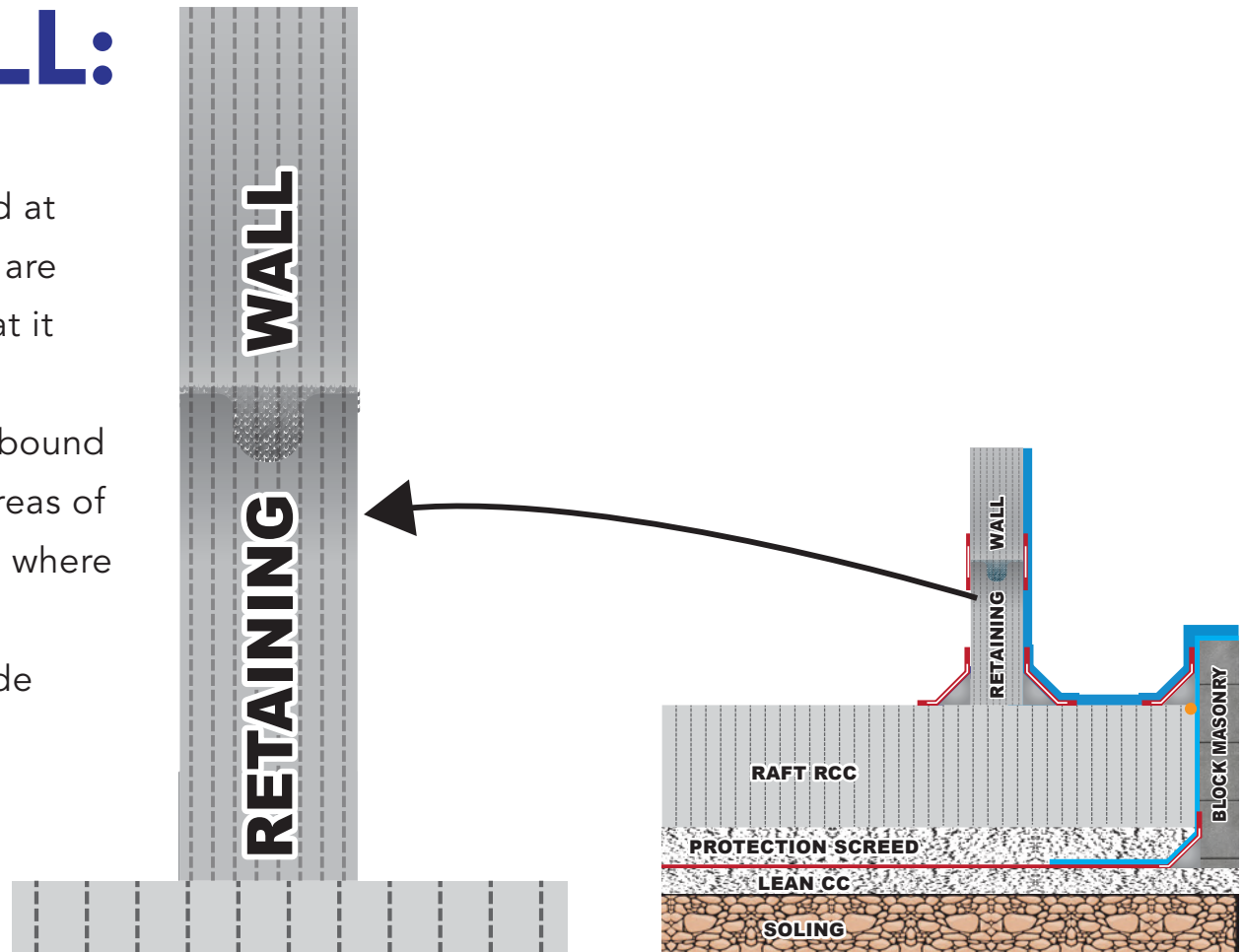


# WATERPROOFING SYSTEM FOR SUBSTRUCTURE (BASEMENT / FOUNDATION)

## STEP # 10.0

### RETAINING WALL:

Retaining walls are relatively rigid walls used for supporting soil laterally so that it can be retained at different levels on the two sides. Retaining walls are structures designed to restrain soil to a slope that it would not naturally keep to (typically a steep, near-vertical or vertical slope). They are used to bound soils between two different elevations often in areas of terrain possessing undesirable slopes or in areas where the landscape needs to be shaped severely and engineered for more specific purposes like hillside farming or roadway overpasses.





# WATERPROOFING SYSTEM FOR SUBSTRUCTURE (BASEMENT / FOUNDATION)

STEP # 11.0

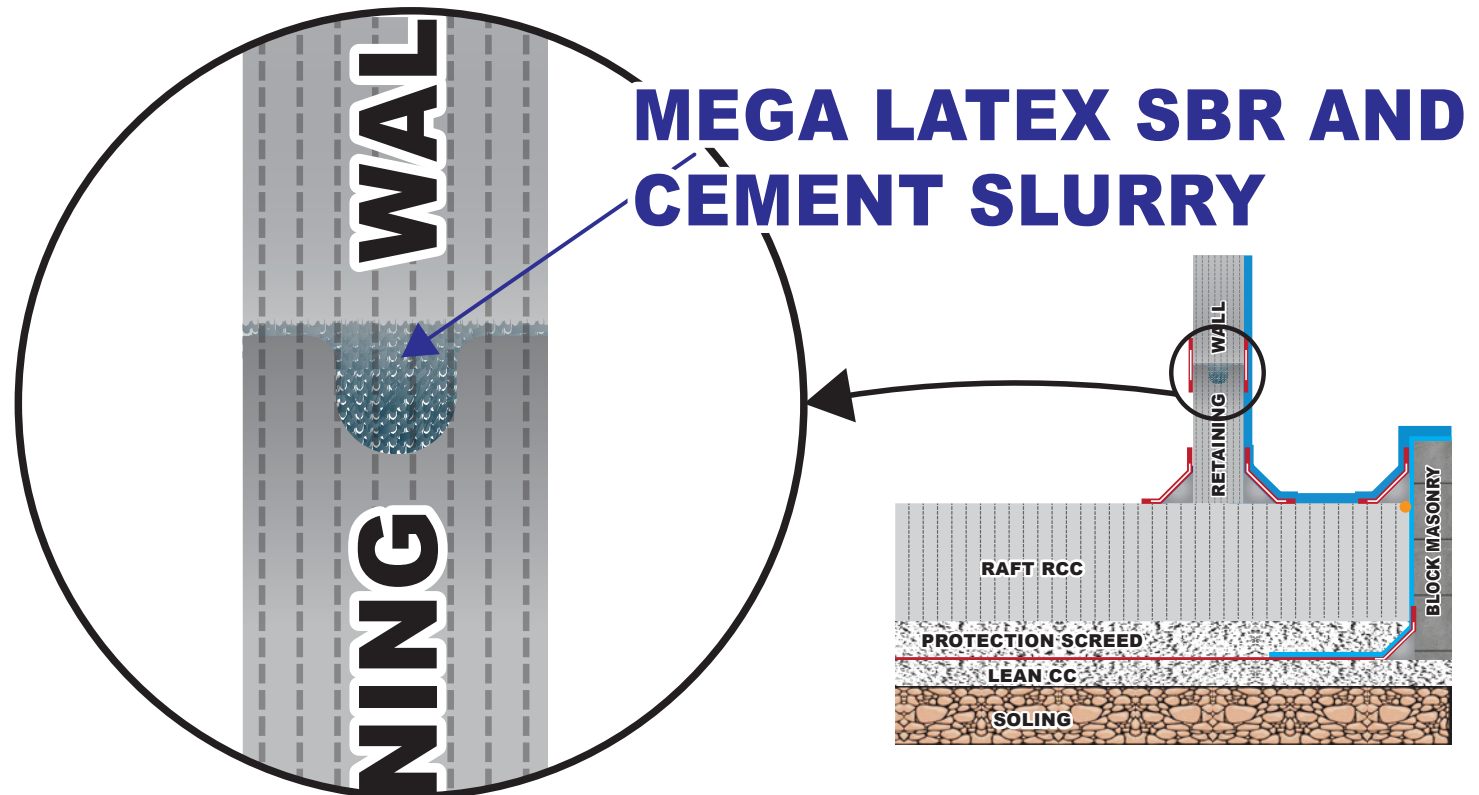
## JOINING RETAINING WALL:

Use **MAGE LATEX SBR** (STYRENE BUTADIENE RUBBER LIQUID ADMIXTURE & BONDING AGENT) to make retaining wall joined strong.



**MEGA LATEX SBR**

STYRENE BUTADIENE RUBBER LIQUID  
ADMIXTURE & BONDING AGENT





# WATERPROOFING SYSTEM FOR SUBSTRUCTURE (BASEMENT / FOUNDATION)

STEP # 12.0

## OUTER SIDE JOINED RETAINING WALL:

**MEGA MESH NP-721** (A HI-TECH NON-WOVEN FABRIC WITH AN EXCELLENT ABRASION RESISTANCE) reinforcement 4" / 6" / 8" along with base and top coat of **MEGA WATER SEAL PRO** to ensure critical areas additional strenght waterproofing treatment.



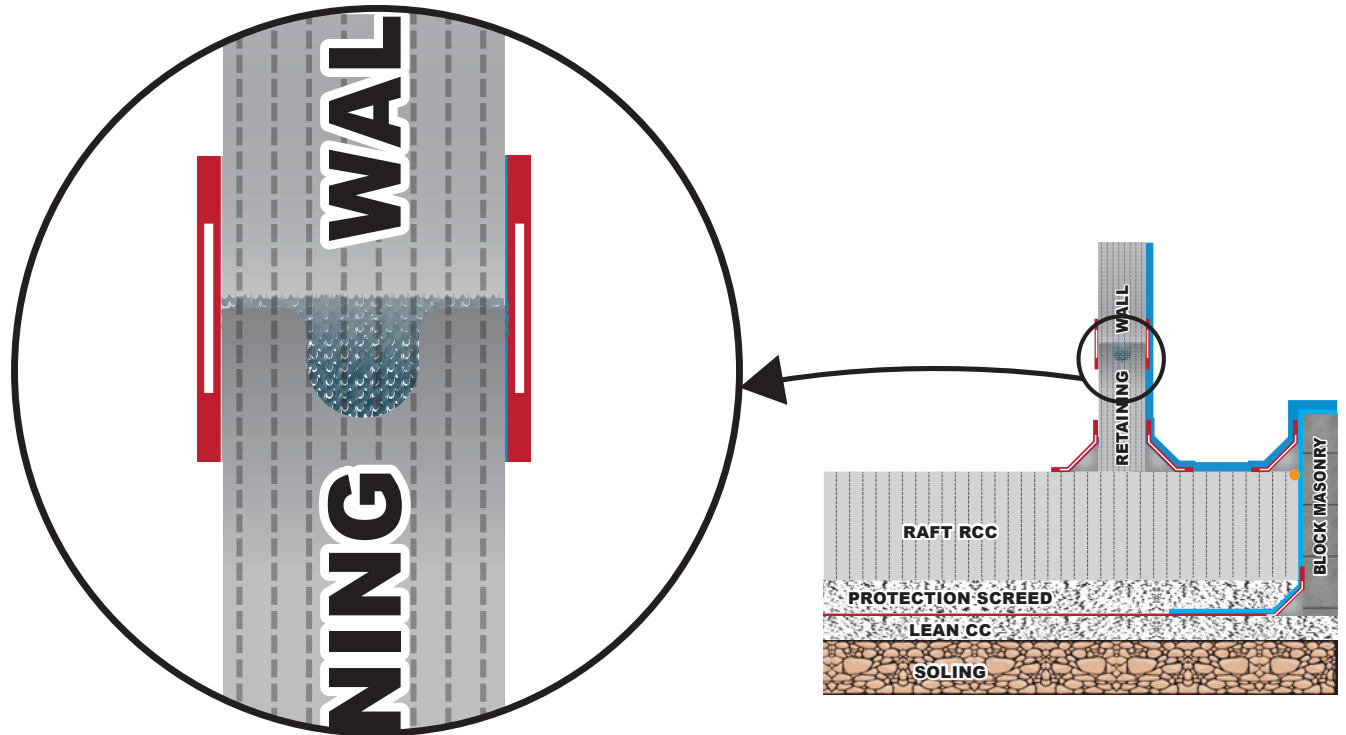
**MEGA WATER SEAL PRO**

PROFESSIONAL GRADE HIGHLY FLEXIBLE  
TWO COMPONENT ACRYLIC CEMENTITIOUS COATING



**MEGA MESH NP-721**

A HI-TECH NON-WOVEN FABRIC WITH  
AN EXCELLENT ABRASION RESISTANCE





# WATERPROOFING SYSTEM FOR SUBSTRUCTURE (BASEMENT / FOUNDATION)



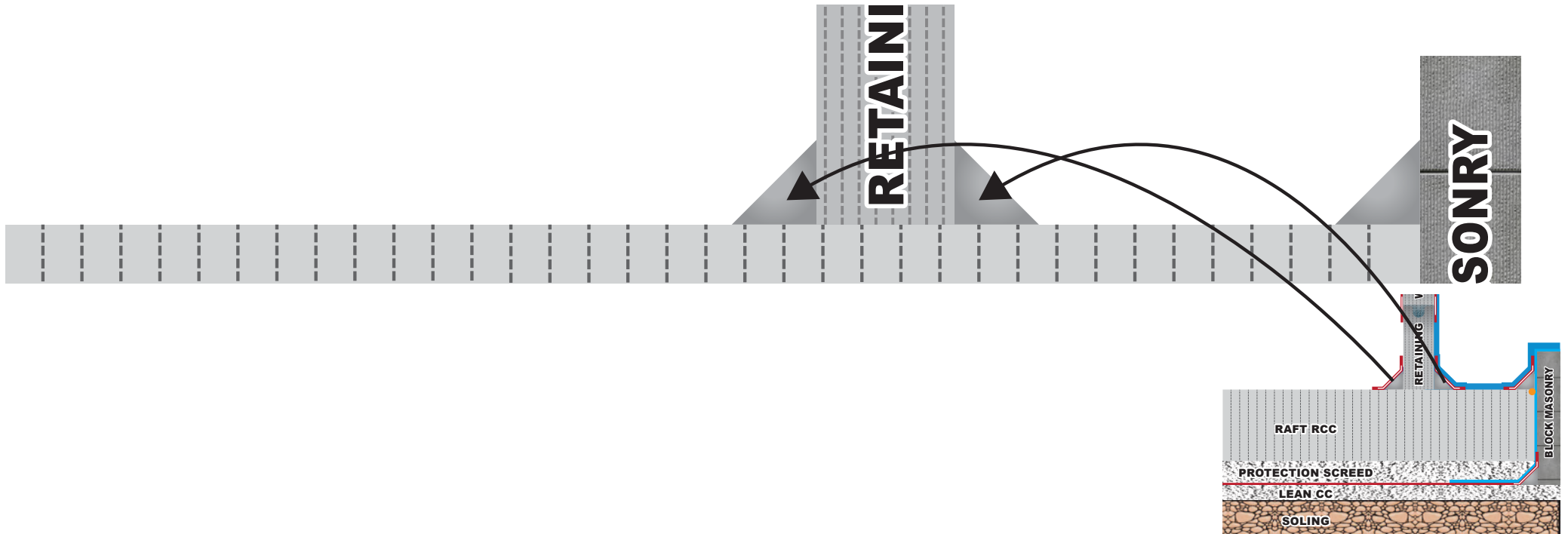


# WATERPROOFING SYSTEM FOR SUBSTRUCTURE (BASEMENT / FOUNDATION)

## STEP # 13.0

# RAFT & RETAINING WALL COVING:

Coving is the technique of installing small barriers lining the edges of a floor where it meets the wall (referred to as coves). Coves are generally rounded 45-degree angles which slope upwards, preventing a hard 90-degree angle where floor and wall meet.





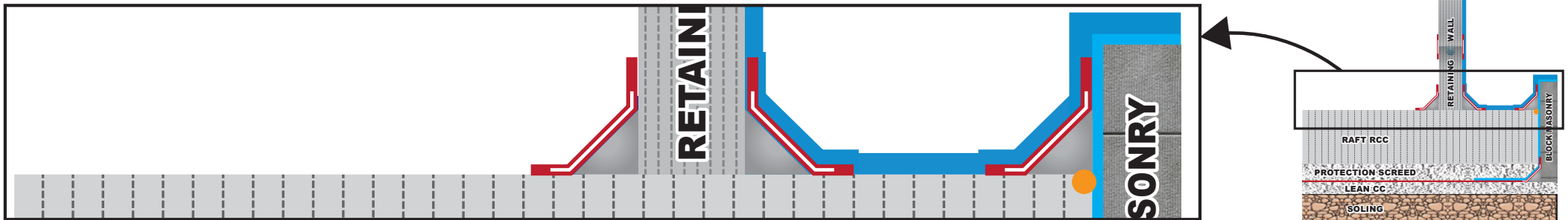


# WATERPROOFING SYSTEM FOR SUBSTRUCTURE (BASEMENT / FOUNDATION)

STEP # 14.0

## COVING COATING:

**MEGA MESH NP-721** (A HI-TECH NON-WOVEN FABRIC WITH AN EXCELLENT ABRASION RESISTANCE) reinforcement 4" / 6" / 8" along with base and top coat of **MEGA WATER SEAL PRO** to ensure critical areas additional strenght waterproofing treatment.



**MEGA WATER SEAL PRO**

PROFESSIONAL GRADE HIGHLY FLEXIBLE  
TWO COMPONENT ACRYLIC CEMENTITIOUS COATING



**MEGA MESH NP-721**

A HI-TECH NON-WOVEN FABRIC WITH  
AN EXCELLENT ABRASION RESISTANCE

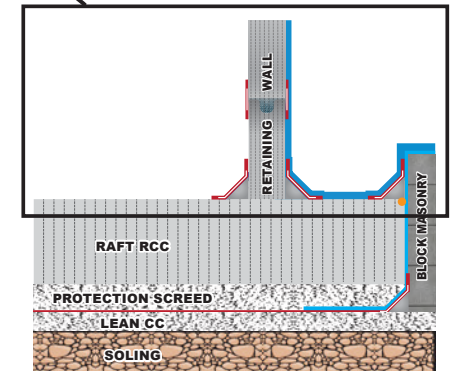
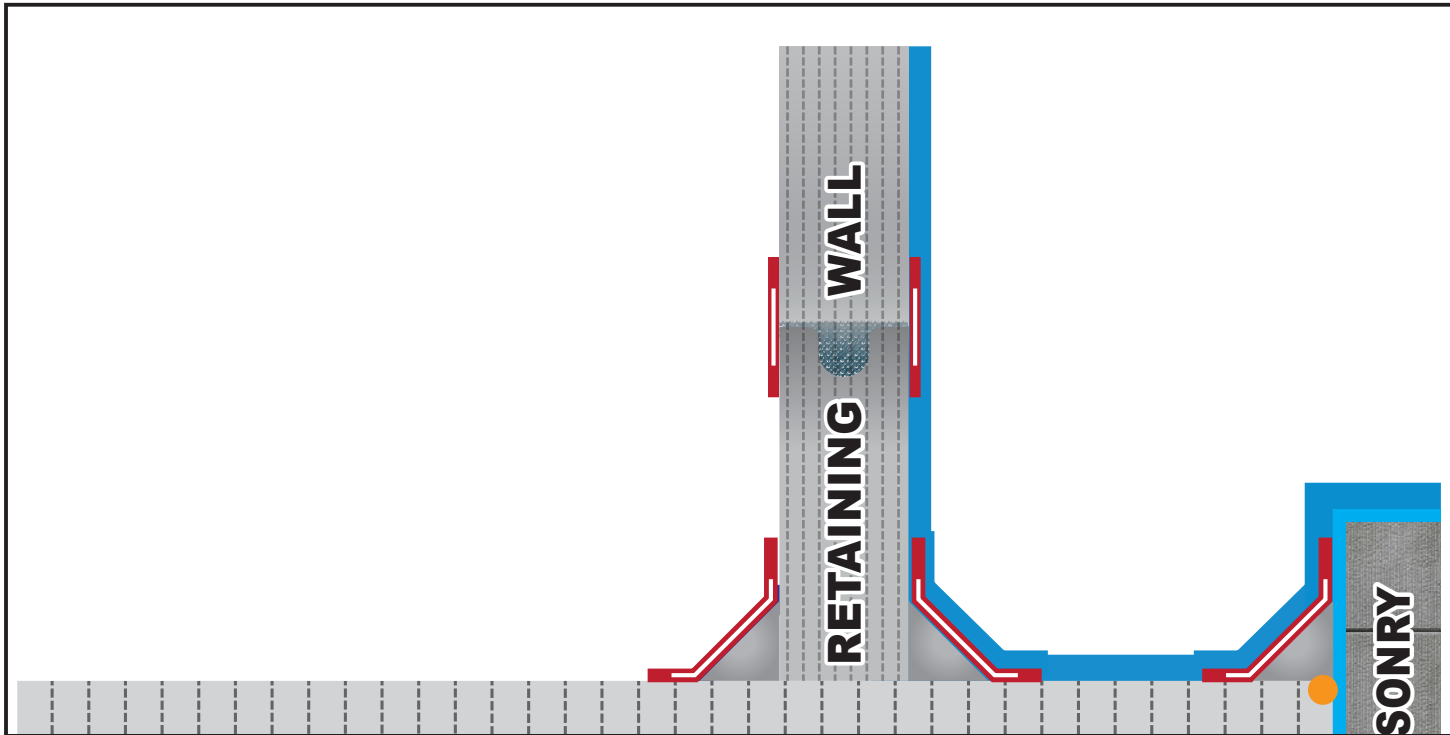


# WATERPROOFING SYSTEM FOR SUBSTRUCTURE (BASEMENT / FOUNDATION)

STEP # 15.0

## RETAINING WALL COATING:

Apply the **MEGA WATER GUARD** (SINGLE COMPONENT POLYURETHANE BASED ELASTOMERIC COATING) to the surface of raft & retaining wall.





# WATERPROOFING SYSTEM FOR SUBSTRUCTURE (BASEMENT / FOUNDATION)



### **HEAD OFFICE & DISPLAY CENTER:**

Plot No. C1-C, 2nd Floor, Main Khayaban-e-Itehad,  
Near KFC, Opposite Dubai Islamic Bank, DHA Phase 7,  
Karachi-Pakistan.

**PLANT:** Plot B-653, Sector-3, Near Life Care Medical,  
Ahsanabad Industrial Area, Karachi-Pakistan.

☎ 021 35318800    🗨 +92 318 3880163    📘 megasealers

✉ info@megagroup.com.pk    🌐 www.megagroup.com.pk



Scan QR Code &  
Discover more