



Mega Sealers
Waterproofing Solutions

MEGA GROUT

HIGH STRENGTH NON SHRINK MORTAR



PRODUCT DESCRIPTION

Mega Grout is a pre-mixed, pre-bagged cementitious non-shrink grouting compound specially formulated to produce a high performance, pourable grout with high strength and expansive properties. This imparts controlled expansion in both the plastic and hardened phases whilst minimizing water demand.

APPLICATIONS & ADVANTAGES

- Excellent initial flow and flow retention.
- High early and ultimate strength facilitates rapid installation and durability of the hardened grout respectively.
- Dual expansion in plastic and hardened phases.
- Impermeable and resistant to oil and water.
- Suitable for pumping or pouring over a large range of application consistencies and temperatures.
- Suitable for grouting and anchoring of UPVC pipes service penetration.

● APPLICATION

INSTRUCTIONS FOR USE

Surface Preparation: Ensure the surface is free of dirt, dust, oil, laitance, paint, curing compounds etc. Bolt holes and fixing pockets should be blown clean of any dirt or debris. Soak the area to be grouted with fresh water for 24 hours prior to grouting; this will minimise local absorption and assist in the free flow of the grout. Immediately before grouting takes place any standing water should be removed with care being taken to blow out all bolt holes and pockets. Base plates, bolts etc must be free of grease, oil and coatings. Equipment should be aligned and fixed in place before grouting. Ensure formwork is secure and watertight to prevent grout loss and movement during placing and curing. The use of formwork tape is recommended. During hot temperatures keep **Mega Grout** and the areas to be grouted cool and shaded.

USES

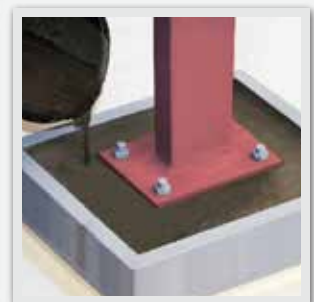
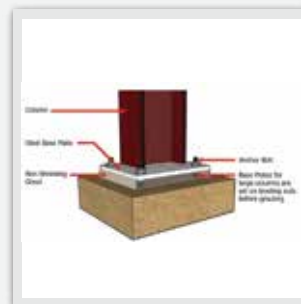
- Used for free flow precision grouting, bedding and void filling applications.
- Used in a wide range of heavy duty applications such as Bridge bearings foundation, Crane rails, general repair, column jacketing, anchor bolt fixing, machine base plates, etc.
- Used for space grouting precast concrete panels and floor repairs.
- Used as a grouting and anchoring agent for UPVC pipes service penetration.

TECHNICAL INFORMATION

Density:	2150 kg/m ³
Compressive strength:	© 3 days : >40 N/mm ² © 7 days : >50 N/mm ² © 28 days : >60 N/mm ²
Yield:	12.50litres
Volume Expansion:	3.6%
Coverage:	50kg/cubicfeet

MIXING

Water contents are at 3-4 litres/ 25 kg bag to ensure the stated results are reproducible on site. Minor increases can be made (+10%) during very hot and dry grouting applications. Prior to mixing ensure that sufficient **Mega Grout** is available to complete all grouting operations. Ensure the mixer is damp but free of standing water. Add the water into the mixer and slowly introduce the entire contents of the bag of **Mega Grout** In hot weather use chilled water for mixing. Mix for at least 5 minutes until the grout has a smooth, even, lump free consistency.



MEGA GROUT

HEAD OFFICE: C1-C, 2nd Floor, Main Khayaban-e-Itehad, Near KFC, Opposite Dubai Islamic Bank, DHA 7, KHI-PAK.
Contact: +92 318 3880163 | +92 213 5318800
PLANT: B-653, Sector-3, Near Life Care Medical, Ahsanabad Industrial Area, Karachi-Pakistan.
www.megasealers.com | info@megasealers.com